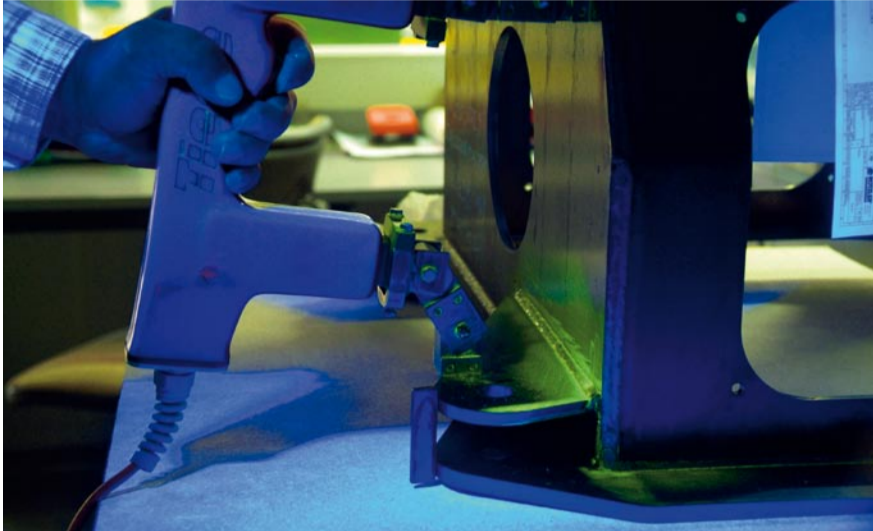


Certified ROTZLER Quality for Greater Safety

Welding technology in accordance with DIN EN ISO 3834-2:2006



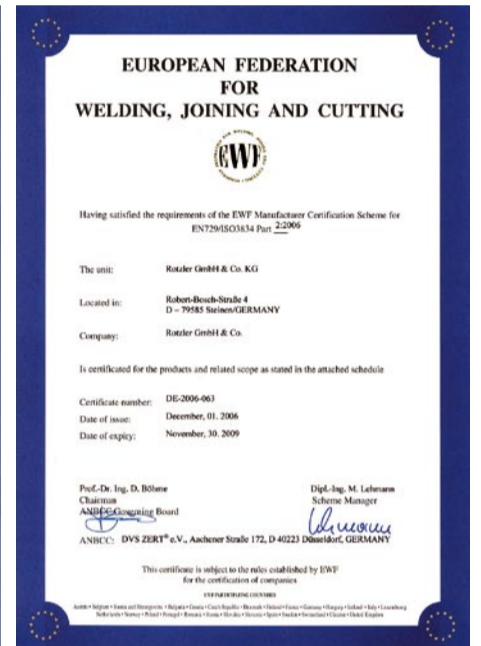
Maximum safety: UV testing of welding seams

Rotzler products are especially known for their safety, which we guarantee by exacting the highest standards from our entire development and production process right up to quality testing. A current example of our policy is the successful certification of Rotzler as a company that fulfils the international DIN EN ISO 3834-2:2006 standard governing the quality demands placed on welding technology. The

international validity of the standard puts Rotzler, as a globally operating winch manufacturer, in a position to provide proof of specified quality requirements in production processes involving welding technology. The certification audits were carried out by accredited external institutes like the DVS (Deutscher Verband für Schweißtechnik – German Federation for Welding Technology) and the EWF (European Federation for

Welding, Joining and Cutting). The audit includes complete welding processes, starting with the construction of welded parts, going through the procurement of material and the use of tested welders in the production chain right up to qualified supervisory staff for the assessment of welded seams or cracks using destruction-free material testing

methods. This ensures that heavy-duty components that have to withstand major strain are ideally manufactured for their designated purpose. This additional quality guarantee provides Rotzler customers and operators of Rotzler products with a certified boost in safety and reliability. Because, after all: trust may be good, but certification is safer.



Cruise Liners – Gleaming Pearls of the Oceans

Use of Rotzler HZ pulling winches at the Meyer Werft shipyard in Papenburg



Large, fast and majestic: the Norwegian Pearl

Who has not at some point dreamed of going on an elegant luxury cruise on the oceans of this world? A company that can make such dreams come true is the German Meyer Werft shipyard in Papenburg. Since the middle of the 1980s, the traditionally family-run company has been building luxury passenger liners, including the well-known AIDA fleet and the Norwegian Pearl, one of the world's fastest cruise liners.

Yet long before any vessel can set a course on the ocean wave with all its passengers on board, it first has to be built. In this case, at a yard offering the most cutting-edge shipbuilding technology. Depending on the size and fitments of the vessel, construction can take nearly 24 months. A ship measuring 295 meters in length with 15 decks and 1,200 passenger cabins requires 20,000 tons of steel to be transported and processed. Perfect

logistics as well as robust, reliable tools and machines play a crucial role at Meyer Werft – all to ensure these gigantic floating hotels are safe to navigate the oceans. For that reason, you will also find Rotzler pulling winches at Meyer Werft in Papenburg. Our hydraulic winches (type HZ 051, max. pulling force of 50 kN) provide valuable assistance in supplying heavy steel sheet for building the decks. The winches are mounted on a transport vehicle that conveys the steel sheet from the warehouse to the fuel machines for further processing. The cabins that later ensure comfortable passenger accommodation are pieced together in this way.



Honeycomb-style integration of the passenger cabins into the hull