

ROTZLER TREIBMATIC VERSION /6 – A powerful winch gets even better



The recovery winches of the ROTZLER TREIBMATIC product family have been ensuring the highest safety standards for more than 13 years. The global success of the TREIBMATIC range of pulling winches rests on their clear user benefits.

The TREIBMATIC/6 version has now been equipped with the latest digital controller as well as a new remote control with additional functionality – for superlative reliability and easier operation.



ROTZLER Safety+

Improved human interface
Improved system failure detection



ROTZLER Performance+

Vehicle communication capability by CANopen
„Extra power“ improves winch performance

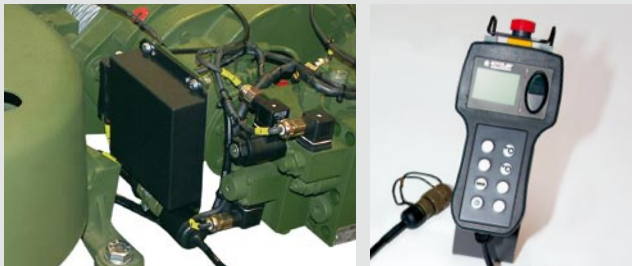


ROTZLER Service+

Improved logistics by standardizing electronic hardware
Integrated emergency operation

The version /6 highlights

- New digital controller
- New remote control



More innovative functions for your support

- Emergency operation functionality
 - Operating unit with integrated backup functionality to operate in emergency
- Vehicle communication capability by CANopen (optional)
- Improved logistics by standardizing on electronic hardware
 - e.g. when provisioning spare parts
- Enhanced diagnostic functions
 - Including cable damage and short circuit detection
- Further improved EMC protection
- Increased water-resistance (IP 67)
- User guidance support
 - Visual feedback to user via LCD display
 - Different languages
- Encapsulated casing for greater robustness
- Only one central connector, electric interfaces are integrated in the cable harness
- Extra power function (optional)
 - Temporary increase of static pulling force
- Automatic rope pay out (optional)
 - One-man operation
- Pre-selection of winch operating direction (optional)
 - Increased safety functionality

Application examples

- Self-recovery winches for off-road vehicles
- Winch systems for recovery and towing vehicles
- Winch systems for armored recovery and engineering vehicles
- Recovery winches and self-recovery winches for light armored wheeled and tracked vehicles
- Winch systems for heavy-load vehicles and tank transporters



Performance



Reliability



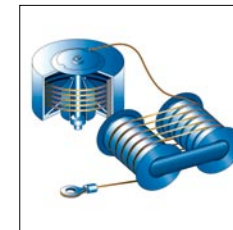
Mobility

Standard features of ROTZLER TREIBMATIC /6 winches

- Space-saving modular concept including winch and cable drum
- Efficient gearbox with hardened and grinded gears
- Storage drum to house the rope
- Grooved, hardened capstan drums
- Hydraulically released holding brake to securely hold the nominal load
- High-performance hydraulic motors
- Load and high speed mode provide two speed options
- Counterbalance valve for controlled lowering of the load
- Digital electronics enable precise, highly-responsive winch control
- End-of-rope sensor provides timely electronic warning



TREIBMATIC TR 200/6



TREIBMATIC principle



ROTZLER GMBH + CO. KG
Winches, capstans and winch systems
Robert-Bosch-Strasse 4
79585 Steinen, Germany
Phone +49(0)7627/701-0
Fax +49(0)7627/701-166
info@rotzler.de
www.rotzler.com